

NEW! 9/16" BORE STAINLESS STEEL CYLINDER



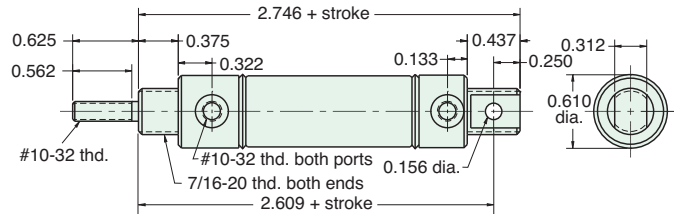
UDR-09-□-□

Double Acting



Mount: Universal **Standard Stroke Lengths:** 1/2", 1", 1-1/2", 2", 3", 4"
Type: Rotating Rod **Maximum Stroke:** 43"
Options: B, V, P2, P3, P4, P5, P6, P7, P8, N, M, MB

For B option add 0.125



Furnished without nut(s). See Chart below.



MOUNTING NUTS

Stud Nut

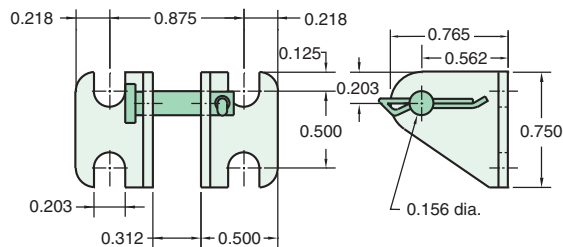
Part Number	Across Flats	Nut Thickness	Nut (Thread)
N07-20	11/16"	1/4"	7/16-20

Rod Nut

Part Number	Across Flats	Nut Thickness	Nut (Thread)
N03-32	3/8"	1/8"	#10-32

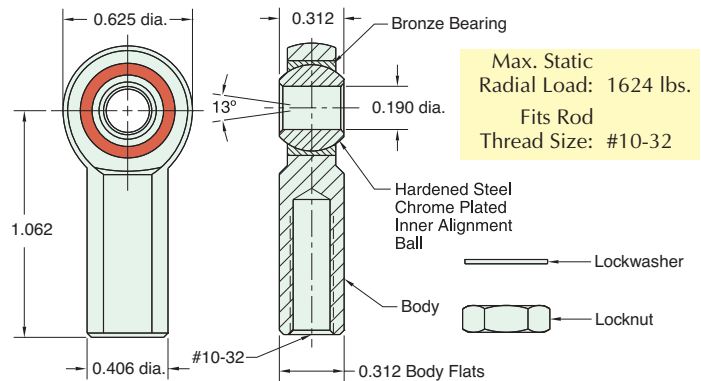
CB-0895

Clevis Bracket
Material: Steel, bright zinc plated



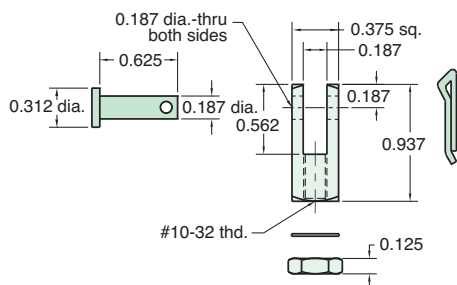
RE-0885

Rod End
Material: Steel, bright zinc plated body



RC-0881

Rod Clevis
Material: Steel, electroless nickel plate



FB-0892

Foot Bracket
Material: Steel, bright zinc plated

